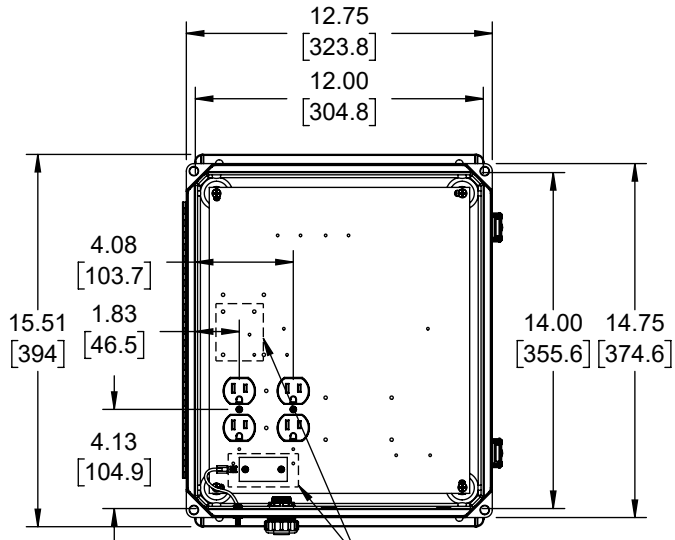
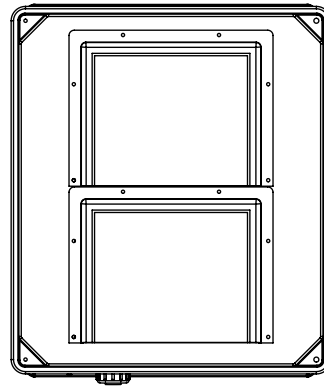


# FRONT VIEW - COVER REMOVED

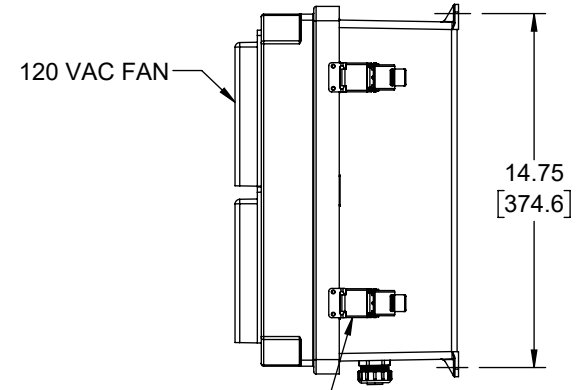


HIDDEN LINES REPRESENT  
COMPONENT ON BACK OF  
PLATE --DO NOT DRILL--

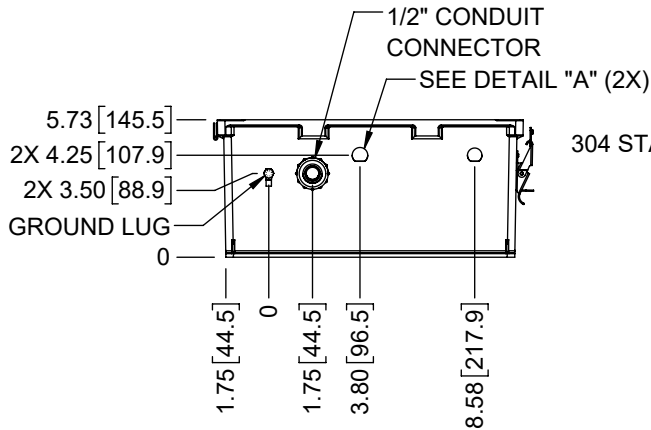
# FRONT VIEW



# RIGHT SIDE VIEW

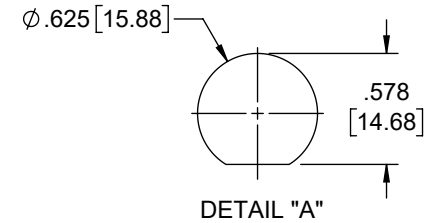
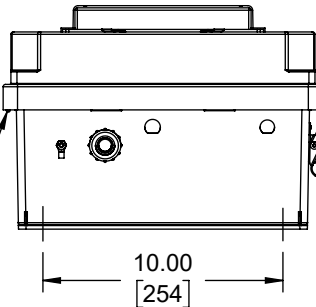


# END VIEW - COVER REMOVED



304 STAINLESS STEEL  
PIANO HINGE

# END VIEW



UNLESS OTHERWISE SPECIFIED LEADING DIMENSIONS ARE INCHES DIMENSIONS IN [ ] ARE MILLIMETERS	
TOLERANCES:	
X = ±.2 [5]	FRACTIONS ± 1/32
.XX = ±.02 [0.5]	ANGLES ± 1°
.XXX = ±.005 [0.13]	
CABLE LENGTH TOLERANCES:	
≤12 [305]	= +1 [25] / -0
>12 [305] ≤60 [1524]	= +2 [51] / -0
>60 [1524] ≤120 [3048]	= +4 [102] / -0
>120 [3048] ≤300 [7620]	= +6 [152] / -0
>300 [7620]	= +5% / -0
ALL DIMENSIONS ARE FOR REFERENCE ONLY AND SUBJECT TO CHANGE WITHOUT NOTICE UN-DIMENSIONED/NON-CRITICAL FEATURES MAY VARY IN SIZE AND LOCATION COLORS MAY VARY	

**L-com**  
an INFINITE® brand

Website: [www.L-com.com](http://www.L-com.com)  
Phone: 1.800.341.5266 | 1.978.682.6936

INTERPRET ALL DIMENSIONS AND TOLERANCES PER ASME Y14.5	
SCALE NONE	SHEET 1 OF 1

DESCRIPTION 14X12X07 FIBERGLASS REINF POLYESTER FRP WEATHERPROOF OUTDOOR IP24 NEMA 3R ENCLOSURE, 120 VAC MNT PLT, SOLID STATE THERMOSTAT FAN GRAY			
SIZE A	CAGE CODE 43321	DRAWN BY BPUCHASKI	ITEM NO. NB141207-10FS
			REV B

THE INFORMATION CONTAINED IN THIS DRAWING IS THE SOLE PROPERTY OF INFINITE ELECTRONICS, INC. ANY REPRODUCTION IN PART OR WHOLE WITHOUT THE WRITTEN PERMISSION OF INFINITE ELECTRONICS, INC. IS PROHIBITED. THESE COMMODITIES, TECHNOLOGY OR SOFTWARE WERE EXPORTED FROM THE UNITED STATES IN ACCORDANCE WITH THE EXPORT ADMINISTRATION REGULATIONS. DIVERSION CONTRARY TO U.S. LAW PROHIBITED.