

6

5

4

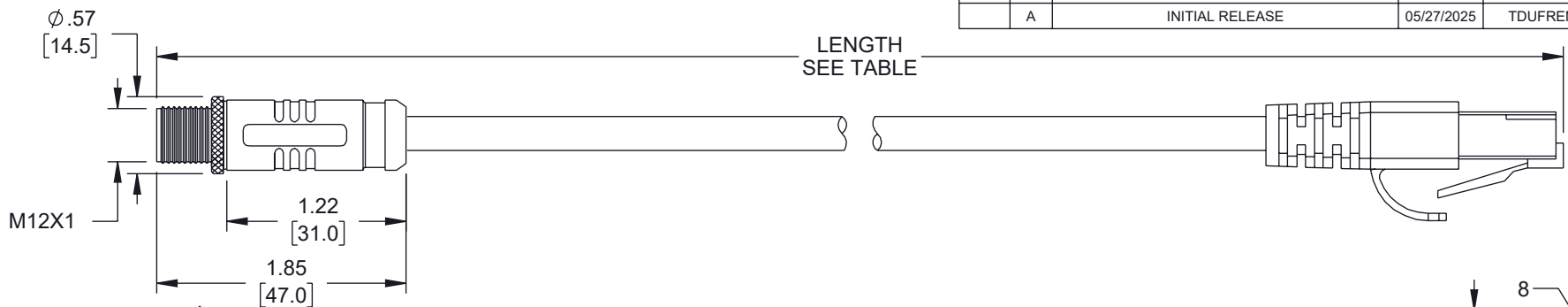
3

REVISION

ZONE	REV	DESCRIPTION	DATE	CHANGED BY	APPROVED
	A	INITIAL RELEASE	05/27/2025	TDUFRENE	GUTTADAURO

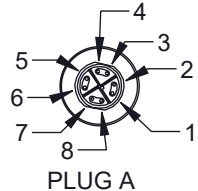
F

F

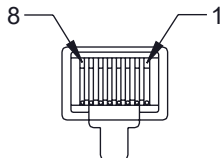
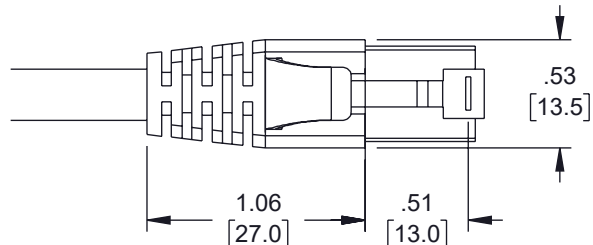
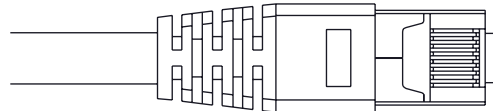


E

E



PLUG A



PLUG B

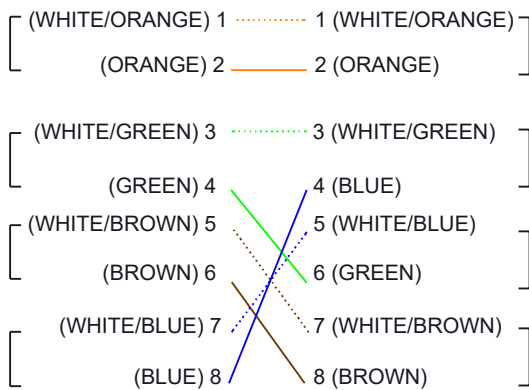
D

D

NOTES:

- CABLE:**  
STRUCTURE: S/FTP 26AWG 4 PAIR PATCH CABLE CAT.7;  
JACKET: PUR, OD: 6.4 0.3mm; MARKING: CTi IEC 61156-6  
CATEGORY 7 S/FTP PATCH CABLE 4 PAIR 26AWG TPU  
BATCH NUMBER 00000001M (SEQUENTIAL LENGTH IN  
METERS); PLUG: M12; OUTER MOLDED: PUR; ZPSG017:  
RJ-45, PLUG 8P8C, RJ-45, PLUG 8P8C, SHIELDED, PIN  
GOLD PLATED 50MICRO-INCH, 2 PRONGS, DOUBLE  
LAYER INSERT (OD=1.1mm), UL94V-0.
- PATCH CABLE:**  
IP CLASS: IP20, OPERATING TEMPERATURE RANGE:  
-40°C TO +85°C; FREQUENCY: 500MHZ; TRANSMISSION  
RATE: UP TO 10Gbps; POE: CAPABLE; PIN ASSIGNMENT:  
1:1; ASSIGNMENT ACC. STANDARD: IEC-61076-2-109;  
FLAME RESISTANCE: UL444 CMX; UV RESISTANCE: IEC  
60068-2-5 (2 CYCLE OF PROCEDURE B); OIL  
RESISTANCE: UL758 60°C; HALOGEN-FREE: IEC 60754-1.
- CONNECTOR:**  
TYPE: CIRCULAR M12, X-CODE, MALE, MOUNTED; PINS:  
8; CATEGORY: CAT 6A; IP CLASS: IP68; TEMPERATURE  
RANGE -25°C TO +85°C; SHIELDED; DURABILITY: 500  
MATING CYCLES; INSULATION RESISTANCE: >100 MOhm;  
CONTACT RESISTANCE: 10 mOhm MAX; WITHSTANDING  
VOLTAGE: 500V AC/MINUTE.

PLUG A



PLUG B

DRAIN WIRE / SCREEN ----- DRAIN WIRE / SCREEN

PART NO.	LENGTH
TRG610-P6N-05M	19.69 [0.5m]
TRG610-P6N-1M	39.37 [1m]
TRG610-P6N-3M	118.11 [3m]
TRG610-P6N-5M	196.85 [5m]
TRG610-P6N-10M	393.7 [10m]

C

C

B

B

A

A

THE INFORMATION CONTAINED IN THIS DRAWING IS THE SOLE PROPERTY OF INFINITE ELECTRONICS, INC. ANY REPRODUCTION IN PART OR WHOLE WITHOUT THE WRITTEN PERMISSION OF INFINITE ELECTRONICS, INC. IS PROHIBITED. THESE COMMODITIES, TECHNOLOGY OR SOFTWARE WERE EXPORTED FROM THE UNITED STATES IN ACCORDANCE WITH THE EXPORT ADMINISTRATION REGULATIONS. DIVERSION CONTRARY TO U.S. LAW PROHIBITED.

UNLESS OTHERWISE SPECIFIED LEADING DIMENSIONS ARE INCHES DIMENSIONS IN [ ] ARE MILLIMETERS

TOLERANCES:  
 .X = ±.2 [5]      FRACTIONS ± 1/32  
 .XX = ±.02 [0.5]      ANGLES ± 1°  
 .XXX = ±.005 [0.13]

CABLE LENGTH TOLERANCES:  
 ≤12 [305] = +1 [25] / -0  
 >12 [305] ≤ 60 [1524] = +2 [51] / -0  
 >60 [1524] ≤ 120 [3048] = +4 [102] / -0  
 >120 [3048] ≤ 300 [7620] = +6 [152] / -0  
 >300 [7620] = +5% / -0

ALL DIMENSIONS ARE FOR REFERENCE ONLY AND SUBJECT TO CHANGE WITHOUT NOTICE. UN-DIMENSIONED/NON-CRITICAL FEATURES MAY VARY IN SIZE AND LOCATION. COLORS MAY VARY.



Website: www.L-com.com  
 Phone: 1.800.341.5266 | 1.978.682.6936

INTERPRET ALL DIMENSIONS AND TOLERANCES PER ASME Y14.5

SCALE	SHEET
NONE	1 OF 1

DESCRIPTION  
 M12 CATEGORY 6A 10GIG IP68 8 POSITION X CODE DOUBLE SHIELDED S/FTP, 26AWG, OUTDOOR INDUSTRIAL CABLE, M12M RJ45M, CMX HFPUR, GRN

SIZE	CAGE CODE	DRAWN BY	ITEM NO.	REV
A	43321	TDUFRENE	TRG610-P6N	A

6

5

4

3

2

1