

6

5

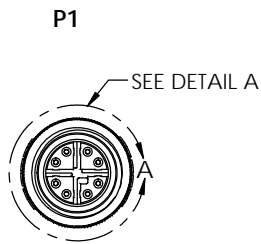
4

3

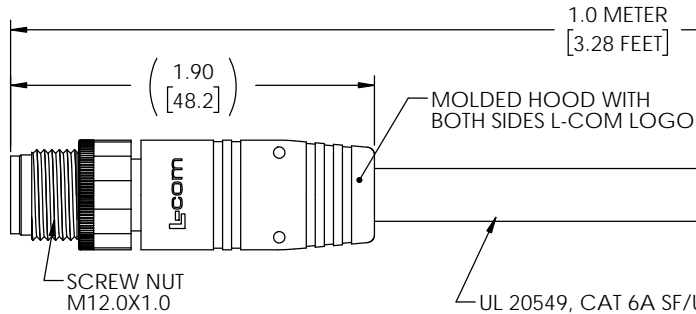
2

1

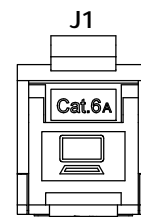
REVISION					
ZONE	REV	DESCRIPTION	DATE	CHANGED BY	APPROVED
	A	INITIAL RELEASE	05/08/2026	BZHANG	WLI



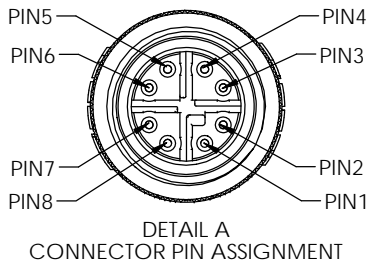
M12 SHIELD MALE
8 POSITION X-CODED



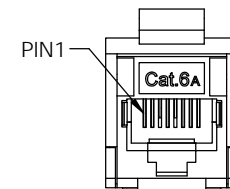
UL 20549, CAT 6A SF/UTP HIGH FLEX INDUSTRIAL ETHERNET CABLE
(4) TWISTED PAIR, 26AWG STRANDED BARE COPPER CONDUCTORS
SHIELDING: ALUMINUM/POLYESTER FOIL PLUS TINNED COPPER BRAID
OUTER JACKET: PUR, TEAL, NOM. DIAM. .276[7.0]



RJ45(8P8C) FIELD-TERM
SHIELD JACK WITH DOOR



DETAIL A
CONNECTOR PIN ASSIGNMENT



DOOR REMOVED
FOR CLARITY

NOTES

MATERIAL:

MOLDED HOOD: TPU,UL94 V-0, BLACK
M12 INSULATOR: NYLON, BLACK
M12 SHELL/SCREW NUT: BRASS ,NICKEL PLATE
M12 CONTACTS: PHOSPHOR BRONZE,15μ" MIN. GOLD PLATE
RJ45 JACK HOUSING/CAP: ZINC ALLOY DIE-CAST
RJ45 JACK INSULATOR: HIGH IMPACT FLAME RETARDANT PLASTIC
RJ45 JACK SPRING SHIELDING: COPPER ALLOY, NICKEL PLATE
RJ45 JACK CONTACTS: PHOSPHOR BRONZE, GOLD PLATE IN CONTACT AREA OVER NICKEL PLATE

ELECTRICAL:

NOMINAL VOLTAGE RATING: 48 VAC/VDC
MAX CURRENT: 0.5A

APPLICATION:

INGRESS PROTECTION RATING IS IP67 (MATED ,P1 ONLY).

ENVIRONMENTAL:

OPERATING TEMPERATURE RANGE: -40°C TO +68°C
CABLE JACKET: OIL, SUNLIGHT AND WELD SPLATTER RESISTANT
CABLE FLEX LIFE: 5 MILLION CYCLE TEST (RADIUS:6X CABLE OD)

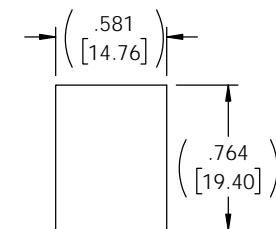
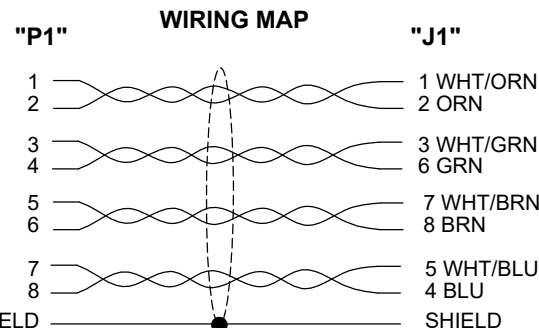
MISCELLANEOUS

CABLE ASSEMBLIES TO BE TESTED FOR CONTINUITY
WIRED TO IEC 61076-2-109 STANDARDS
CABLE ASSEMBLY SHALL BE INDIVIDUALLY PACKAGED IN ACCORDANCE WITH L-COM SPECIFICATION PS-0031.


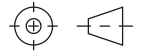
REGULATORY COMPLIANCE:

EU RoHS DIRECTIVE (MOST RECENT RELEASED VERSION)

THE INFORMATION CONTAINED IN THIS DRAWING IS THE SOLE PROPERTY OF INFINITE ELECTRONICS, INC. ANY REPRODUCTION IN PART OR WHOLE WITHOUT THE WRITTEN PERMISSION OF INFINITE ELECTRONICS, INC. IS PROHIBITED. THESE COMMODITIES, TECHNOLOGY OR SOFTWARE WERE EXPORTED FROM THE UNITED STATES IN ACCORDANCE WITH THE EXPORT ADMINISTRATION REGULATIONS. DIVERSION CONTRARY TO U.S. LAW PROHIBITED.



RECOMMENDED
PANEL OPENING

UNLESS OTHERWISE SPECIFIED LEADING DIMENSIONS ARE INCHES DIMENSIONS IN [] ARE MILLIMETERS TOLERANCES: .X = ±.2 [5] FRACTIONS ± 1/32 .XX = ±.02 [0.5] ANGLES ± 1° .XXX = ±.005 [0.13]		 an INFINIT@ brand Website: www.L-com.com Phone: 1.800.341.5266 1.978.682.6936		 INTERPRET ALL DIMENSIONS AND TOLERANCES PER ASME Y14.5 SCALE: NONE SHEET: 1 OF 1	
CABLE LENGTH TOLERANCES: ≤12 [305] = +1 [25] / -0 >12 [305] ≤ 60 [1524] = +2 [51] / -0 >60 [1524] ≤ 120 [3048] = +4 [102] / -0 >120 [3048] ≤ 300 [7620] = +6 [152] / -0 >300 [7620] = +5% / -0		DESCRIPTION <p style="text-align: center; font-size: 1.2em;">C6A M12X M/RJ45F PUR 26 TEL 1M</p>			
ALL DIMENSIONS ARE FOR REFERENCE ONLY AND SUBJECT TO CHANGE WITHOUT NOTICE. UN-DIMENSIONED NON-CRITICAL FEATURES MAY VARY IN SIZE AND LOCATION. COLORS MAY VARY.	SIZE A	CAGE CODE 43321	DRAWN BY BZHANG	ITEM NO. TRG625-P6T-1M	REV A

6

5

4

3

2

1