

6

5

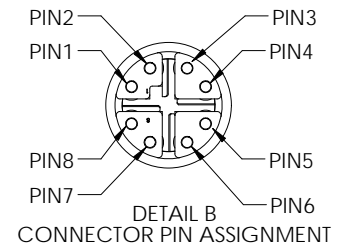
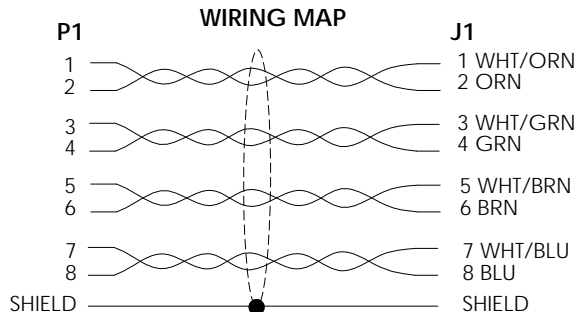
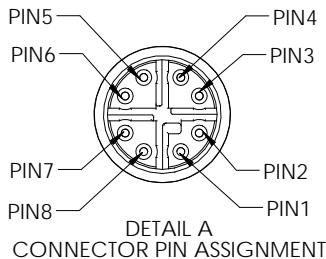
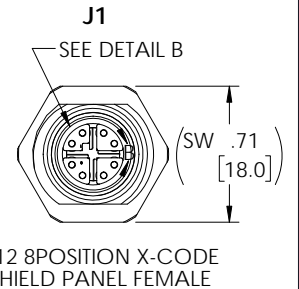
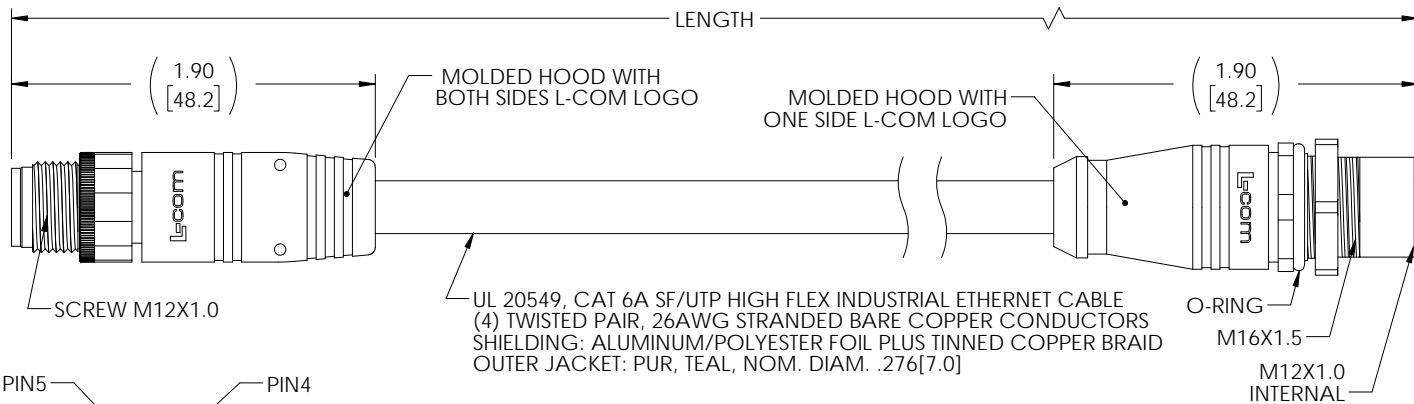
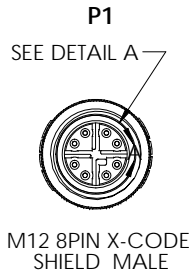
4

3

2

1

REVISION					
ZONE	REV	DESCRIPTION	DATE	CHANGED BY	APPROVED
	A	INITIAL RELEASE	05/08/2026	BZHANG	WLI



**NOTES**

**MATERIAL:**  
 MOLDED HOOD: TPU,UL94 V-0 BLACK  
 M12 INSULATOR: NYLON, BLACK  
 M12 SHELL/SCREW NUT: BRASS, NICKEL PLATE  
 M12 CONTACTS: PHOSPHOR BRONZE,15" MIN. GOLD PLATE  
 M12 O-RING:VITON

**ELECTRICAL:**  
 NOMINAL VOLTAGE RATING: 48V AC/DC  
 MAX CURRENT: 0.5A

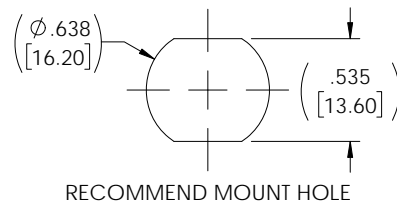
**APPLICATION:**  
 INGRESS PROTECTION RATING IS IP67(MATED)

**ENVIRONMENTAL:**  
 OPERATING TEMPERATURE RANGE: -40°C TO +75°C  
 CABLE JACKET: OIL, SUNLIGHT and WELD SPLATTER RESISTANT  
 CABLE FLEX LIFE: 5 MILLION CYCLE TEST (RADIUS:6X CABLE OD)

**MISCELLANEOUS**  
 CABLE ASSEMBLIES TO BE TESTED FOR CONTINUITY WIRED TO IEC 61076-2-109 STANDARDS  
 CABLE ASSEMBLY SHALL BE INDIVIDUALLY PACKAGED IN ACCORDANCE WITH L-COM SPECIFICATION PS-0031.

**REGULATORY COMPLIANCE:**  
 EU RoHS DIRECTIVE (MOST RECENT RELEASED VERSION)

THE INFORMATION CONTAINED IN THIS DRAWING IS THE SOLE PROPERTY OF INFINITE ELECTRONICS, INC. ANY REPRODUCTION IN PART OR WHOLE WITHOUT THE WRITTEN PERMISSION OF INFINITE ELECTRONICS, INC. IS PROHIBITED. THESE COMMODITIES, TECHNOLOGY OR SOFTWARE WERE EXPORTED FROM THE UNITED STATES IN ACCORDANCE WITH THE EXPORT ADMINISTRATION REGULATIONS. DIVERSION CONTRARY TO U.S. LAW PROHIBITED.



PART NUMBER	LENGTH	
	METERS	FEET
TRG626-P6T-05M	0.5	1.64
TRG626-P6T-1M	1.0	3.28
TRG626-P6T-2M	2.0	6.56
TRG626-P6T-3M	3.0	9.84
TRG626-P6T-5M	5.0	16.41
TRG626-P6T-10M	10.0	32.82
TRG626-P6T-15M	15.0	49.22

UNLESS OTHERWISE SPECIFIED LEADING DIMENSIONS ARE INCHES DIMENSIONS IN [ ] ARE MILLIMETERS

**TOLERANCES:**

.X = ±.2 [5]	FRACTIONS ± 1/32
.XX = ±.02 [0.5]	ANGLES ± 1°
.XXX = ±.005 [0.13]	

**CABLE LENGTH TOLERANCES:**

≤12 [305]	= +1 [25] / -0
>12 [305] ≤ 60 [1524]	= +2 [51] / -0
>60 [1524] ≤ 120 [3048]	= +4 [102] / -0
>120 [3048] ≤ 300 [7620]	= +6 [152] / -0
>300 [7620]	= +5% / -0

ALL DIMENSIONS ARE FOR REFERENCE ONLY AND SUBJECT TO CHANGE WITHOUT NOTICE UN-DIMENSIONED NON-CRITICAL FEATURES MAY VARY IN SIZE AND LOCATION COLORS MAY VARY

**L-com**  
an INFINIT@ brand

Website: www.L-com.com  
Phone: 1.800.341.5266 | 1.978.682.6936

INTERPRET ALL DIMENSIONS AND TOLERANCES PER ASME Y14.5

SCALE	SHEET
NONE	1 OF 1

DESCRIPTION				
C6A M12X M/F PN PUR 26 TEL				
SIZE	CAGE CODE	DRAWN BY	ITEM NO.	REV
A	43321	BZHANG	TRG626-P6T	A

6

5

4

3

2

1