

900, 1800 MHz Omni Antenna 5.5 dBi Gain, 5.5 mm Spring  
FME Male Connector, White Stainless Steel



## LCANOM1080

### Features

- 5mm Spring Diameter
- Vertically Polarized
- 5.5 dBi Gain
- FME Male Connector
- 14.75 ft RG58 Cable
- Stainless Steel

### Applications

- Offroad/Overland Vehicles
- Mining/Industrial Heavy Equipment
- Commercial Trucking
- Fleet Management
- Farm Equipment

### Description

The L-com LCANOM1080 is a single band antenna that ships on the same day as ordered. Our vertical polarized antenna with 900 to 1800 MHz frequency range has a FME male connectors. This antenna with a white radome made of stainless steel has an overall length of 39.37 in, a width of 2 in, and a weight of 2.2 lbs.

L-com's LCANOM1080 is a single band antenna operating from 900 to 1800 MHz with 5.5 dBi gain. The omni directional antenna has a maximum input VSWR of 2:1.

L-com has one of the largest in-stock collections of omni directional antennas with our wide selection of superior quality RF parts, that ship same day. Make your online purchase right now to take advantage of our same-day shipping. For further information on similar products, our expert technical support and knowledgeable sales team can help you get the ideal single band antenna as per your requirement.

### Configuration

Band Type	Dual
Radiation Pattern	Omni Directional
Polarization	Vertical
Connector Type	NMO

### Electrical Specifications

Description	Minimum	Typical	Maximum	Units
Frequency Range	900		1,800	MHz
Input VSWR			2:1	
Impedance		50		Ohms
Gain		5.5		dBi
Input Power			100	Watts

### Specifications by Band

Click the following link (or enter part number in "SEARCH" on website) to obtain additional part information including price, inventory and certifications:  
[900, 1800 MHz Omni Antenna 5.5 dBi Gain, 5.5 mm Spring FME Male Connector, White Stainless Steel LCANOM1080](#)

900, 1800 MHz Omni Antenna 5.5 dBi Gain, 5.5 mm Spring FME Male Connector, White Stainless Steel



## LCANOM1080

Description	Band 1	Band 2	Band 3	Band 4	Band 5	Units
Range	0.925 to 0.96	1.805 to 1.88				GHz

### Mechanical Specifications

Radome Material	Stainless Steel
<b>Size</b>	
Length	39.37 in [100 cm]
Width	2 in [50.8 mm]
Height	2 in [50.8 mm]
Weight	2.2 lbs [997.9 g]

### Environmental Specifications

<b>Temperature</b>	
Operating Range	-40 to +80 deg C

**Compliance Certifications** (see [product page](#) for current document)

### Plotted and Other Data

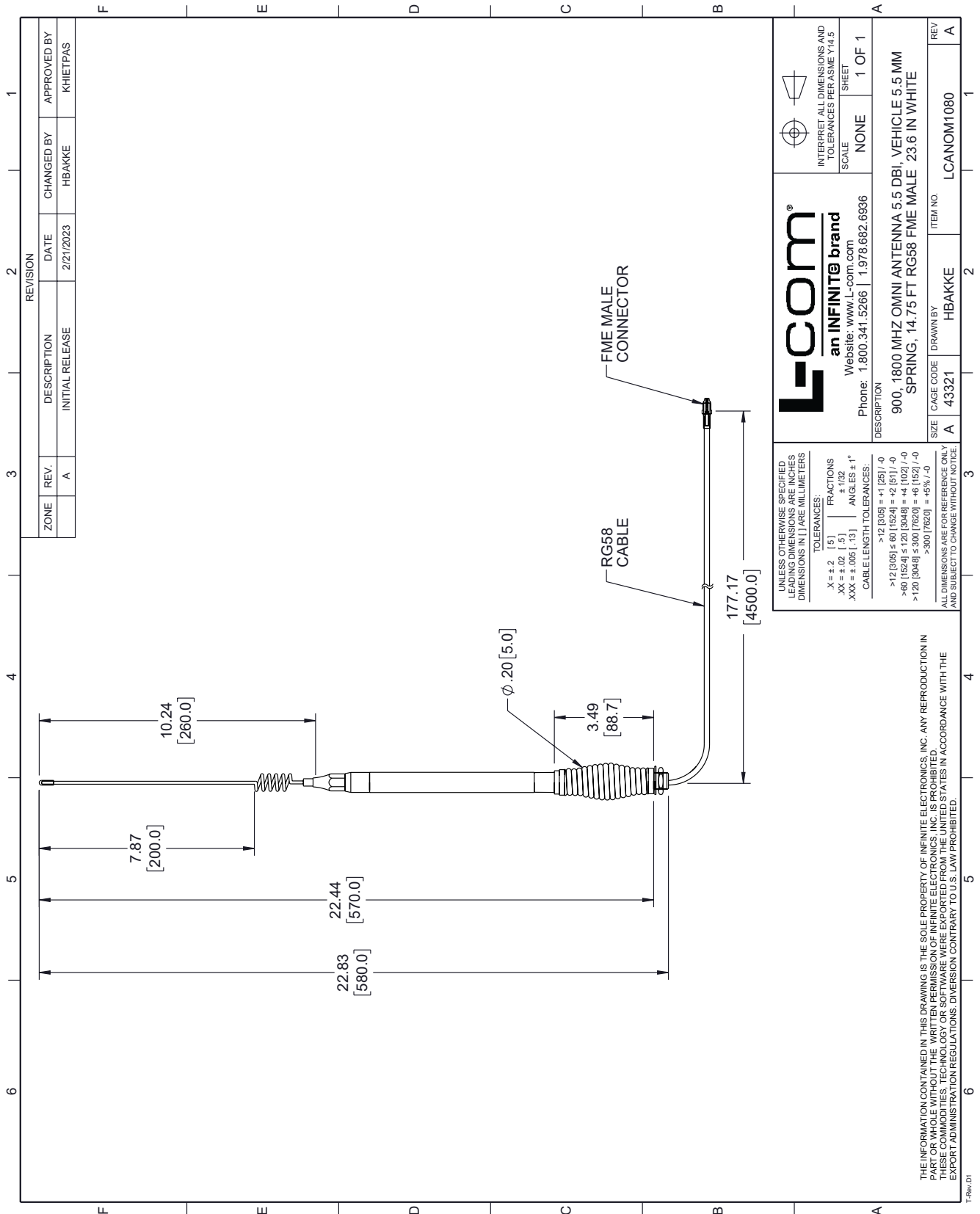
Notes:

900, 1800 MHz Omni Antenna 5.5 dBi Gain, 5.5 mm Spring FME Male Connector, White Stainless Steel from L-com has same day shipment for domestic and International orders. Our portfolio includes coaxial cable assemblies, connectors, adapters and custom products as well as lightning and surge protectors, NEMA rated enclosures, and an RF product line which includes antennas, amplifiers, passive, and active components.

The information contained within this document is accurate to the best of our knowledge and representative of the part described herein. It may be necessary to make modifications to the part and/or the documentation of the part in order to implement improvements. L-com reserves the right to make such changes as required. Unless otherwise stated, all specifications are nominal. L-com does not make any representation or warranty regarding the suitability of the part described herein for any particular purpose, and L-com does not assume liability arising out of the use of any part or document.

900, 1800 MHz Omni Antenna 5.5 dBi Gain, 5.5 mm Spring FME Male Connector, White Stainless Steel

L-com CAD Drawing



REVISION			
ZONE	REV.	DESCRIPTION	DATE
	A	INITIAL RELEASE	2/21/2023
		CHANGED BY	HBAKKE
		APPROVED BY	KHIETPAS

**L-com**  
an INFINITE brand  
Website: www.L-com.com  
Phone: 1.800.341.5266 | 1.978.682.6936

INTERPRET ALL DIMENSIONS AND TOLERANCES PER ASME Y14.5  
SCALE: NONE  
SHEET: 1 OF 1

DESCRIPTION: 900, 1800 MHZ OMNI ANTENNA 5.5 DBI, VEHICLE 5.5 MM SPRING, 14.75 FT RG58 FME MALE 23.6 IN WHITE

SIZE: A  
CAGE CODE: 43321  
DRAWN BY: HBAKKE  
ITEM NO.: LCOM01080

REV: A

UNLESS OTHERWISE SPECIFIED, LEADING DIMENSIONS ARE INCHES, DIMENSIONS IN [ ] ARE MILLIMETERS.

TOLERANCES:  
X = ±.2 [5] FRACTIONS  
XX = ±.02 [5] ANGLES ±1°  
XXX = ±.005 [13]

CABLE LENGTH TOLERANCES:  
>12 [305] = ±1 [25] / -0  
>60 [1524] = ±60 [1524] = ±2 [51] / -0  
>120 [3048] = ±120 [3048] = ±4 [102] / -0  
>300 [7620] = ±300 [7620] = ±6 [152] / -0  
>900 [22860] = ±9% / -0

ALL DIMENSIONS ARE FOR REFERENCE ONLY AND SUBJECT TO CHANGE WITHOUT NOTICE.

THE INFORMATION CONTAINED IN THIS DRAWING IS THE SOLE PROPERTY OF INFINITE ELECTRONICS, INC. ANY REPRODUCTION IN PART OR WHOLE WITHOUT THE WRITTEN PERMISSION OF INFINITE ELECTRONICS, INC. IS PROHIBITED. THESE COMMODITIES, TECHNOLOGY OR SOFTWARE WERE EXPORTED FROM THE UNITED STATES IN ACCORDANCE WITH THE EXPORT ADMINISTRATION REGULATIONS. DIVERSION CONTRARY TO U.S. LAW PROHIBITED.

T-Rev: 01