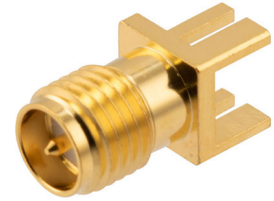


RF PCB Connector, RP SMA Female straight (End launch)



## RFPCB-RPSMA-FS18G-28

### Configuration

- SMA Female Connector
- 50 Ohms
- Straight Body Geometry

### Features

- Max Frequency 18 GHz
- Cu Ni Au plating

### Applications

- PCB Applications
- General Purpose Test

### Description

RFPCB-RPSMA-FS18G-28 reverse polarity SMA jack PCB connector available from L-com has a 50 Ohm impedance. This RF connector has an end launch connector mount interface and is designed for a wide variety of Printed-Circuit Board (PCB) applications in RF and microwave systems. The SMA connector is available in a 0.52-inch length, 0.25-inch width, and 0.25-inch height.

The L-com reverse polarity SMA jack PCB connector has a PTFE dielectric type. This SMA PCB connector has a brass body with Gold over Nickel over Copper plating. Our RFPCB-RPSMA-FS18G-28 SMA connector uses brass contact and Gold over Nickel over Copper plating material. The reverse polarity SMA jack connector uses solder as an attachment method. Additional dimensions and specifications for this SMA jack PCB RF connector are on our downloadable PDF datasheet above.

This L-com SMA jack connector will ship the same day as purchased. Our SMA jack connector is part of over 40,000 RF, microwave, and millimeter wave components in stock for worldwide shipment. We also build SMA custom connector cable assemblies that will ship the same day as well.

This SMA jack connector with 50 Ohm impedance has a weight of 0.02 lbs. The RFPCB-RPSMA-FS18G-28 threaded RF connector has a high-quality construction. We currently have a variety of antenna, audio/video, Ethernet, fiber optic, and USB connectors in our portfolio that are ready to ship today. For further information on similar products, our expert technical support and knowledgeable sales team can help you get the high-quality RF product that meets your requirements.

### Electrical Specifications

Description	Minimum	Typical	Maximum	Units
Frequency Range	DC		18	GHz

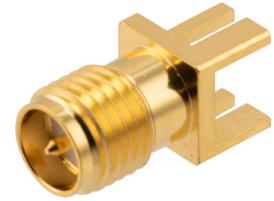
### Mechanical Specifications

#### Size

Length	0.52 in [13.21 mm]
Width	0.25 in [6.35 mm]
Height	0.25 in [6.35 mm]
Weight	0.02 lbs [9.07 g]

Click the following link (or enter part number in "SEARCH" on website) to obtain additional part information including price, inventory and certifications:  
[RF PCB Connector, RP SMA Female straight \(End launch\) RFPCB-RPSMA-FS18G-28](#)

RF PCB Connector, RP SMA Female straight (End launch)



## RFPCB-RPSMA-FS18G-28

### Material Specifications

Description	Material	Plating
Contact	Brass	Gold over Nickel over Copper
Insulation	PTFE	
Body	Brass	Gold over Nickel over Copper

### Environmental Specifications

**Compliance Certifications** (see [product page](#) for current document)

### Plotted and Other Data

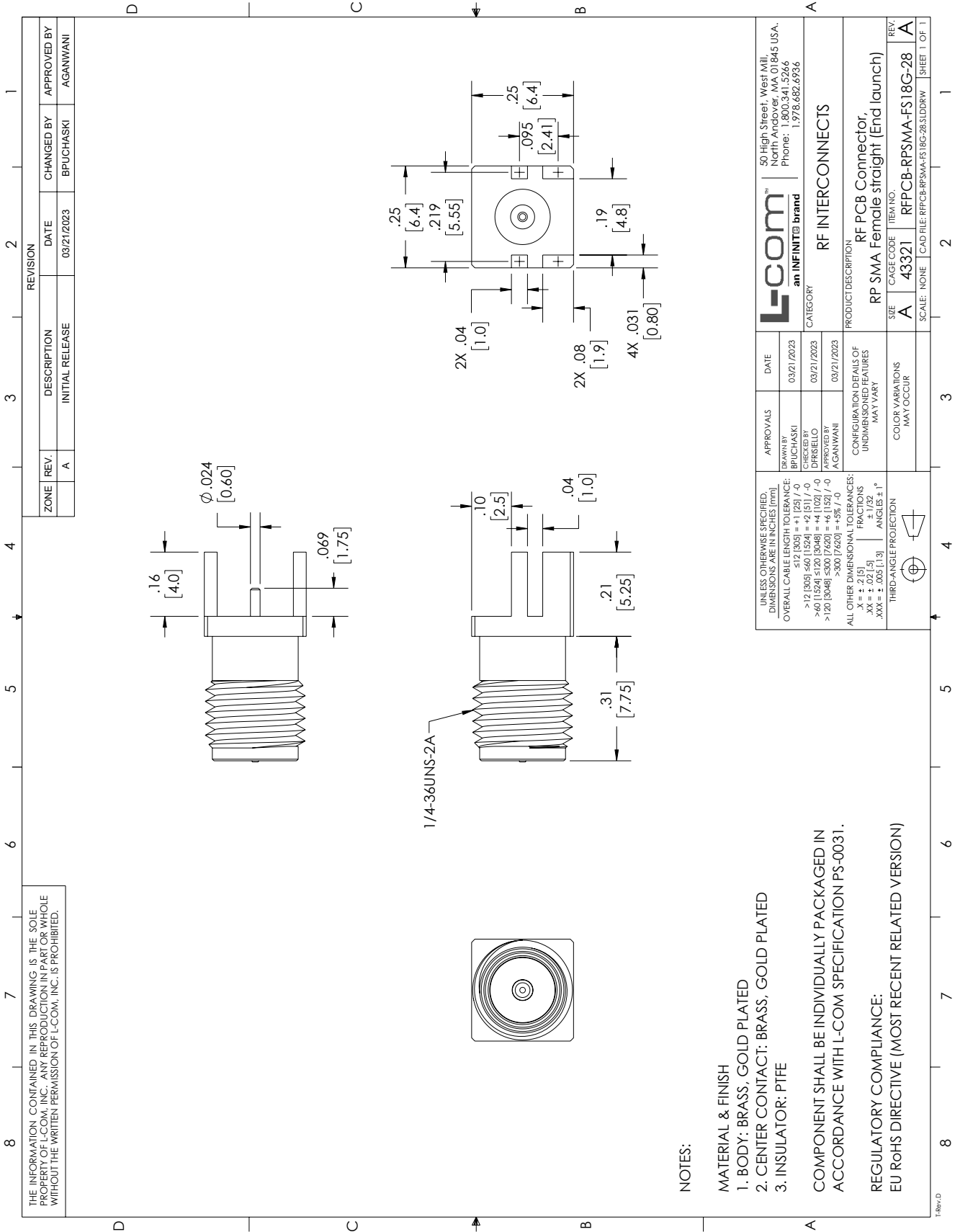
RF PCB Connector, RP SMA Female straight (End launch) from L-com has same day shipment for domestic and International orders. Our portfolio includes coaxial cable assemblies, connectors, adapters and custom products as well as lightning and surge protectors, NEMA rated enclosures, and an RF product line which includes antennas, amplifiers, passive, and active components. Click the following link (or enter part number in "SEARCH" on website) to obtain additional part information including price, inventory and certifications: RF PCB Connector, RP SMA Female straight (End launch) RFPCB-RPSMA-FS18G-28

URL: <https://www.l-com.com/rp-sma-jack-pcb-connector-solder-attachment-end-launch-brass-rfpcb-rpsma-fs18g-28-p.aspx>

The information contained within this document is accurate to the best of our knowledge and representative of the part described herein. It may be necessary to make modifications to the part and/or the documentation of the part in order to impliment improvements. L-com reserves the right to make such changes as required. Unless otherwise stated, all specifications are nominal. L-com does not make any representation or warranty regarding the suitability of the part described herein for any particular purpose, and L-com does not assume liability arising out of the use of any part or document.ontained within this document is accurate to the best of our knowledge and representative of the part described herein. It may be necessary to make modifications to the part and/or the documentation of the part in order to impliment improvements. L-com reserves the right to make such changes as required. Unless otherwise stated, all specifications are nominal. L-com does not make any representation or warranty regarding the suitability of the part described herein for any particular purpose, and L-com does not assume liability arising out of the use of any part or document.

RF PCB Connector, RP SMA Female straight (End launch)

L-com CAD Drawing



THE INFORMATION CONTAINED IN THIS DRAWING IS THE SOLE PROPERTY OF L-COM, INC.. ANY REPRODUCTION IN PART OR WHOLE WITHOUT THE WRITTEN PERMISSION OF L-COM, INC. IS PROHIBITED.

NOTES:

- MATERIAL & FINISH
- 1. BODY: BRASS, GOLD PLATED
- 2. CENTER CONTACT: BRASS, GOLD PLATED
- 3. INSULATOR: PTFE
- COMPONENT SHALL BE INDIVIDUALLY PACKAGED IN ACCORDANCE WITH L-COM SPECIFICATION PS-0031.
- REGULATORY COMPLIANCE: EU ROHS DIRECTIVE (MOST RECENT RELATED VERSION)