

RF PCB Connector, SMA, Female, Up to 18 GHz,
End Launch, Straight, With Round Contact



RFPCB-SMA-FS18G-52

Configuration

- SMA Female Connector
- 50 Ohms
- Straight Body Geometry
- Connector Interface Types: End Launch

Features

- Max. Operating Frequency 18 GHz
- Gold Plated Beryllium Copper Alloy Contact

Applications

- General Purpose Test
- PCB Applications

Description

RFPCB-SMA-FS18G-52 SMA female PCB connector available from L-com has a 50 Ohm impedance. This RF connector has an end launch connector mount interface and is designed for a wide variety of Printed-Circuit Board (PCB) applications in RF and microwave systems. This SMA female connector uses solder as an attachment method. Our SMA female PCB connector provides a minimum frequency of DC and a maximum frequency of 18 GHz. The SMA connector is available in a 0.57-inch length and 0.22-inch width. The L-com SMA female PCB connector has a PTFE dielectric type. This SMA PCB connector has a brass body with gold plating. Our RFPCB-SMA-FS18G-52 SMA connector uses beryllium copper alloy contacts and gold plating material. This SMA female PCB radio frequency connector is RoHS and REACH compliant.

This L-com SMA female connector will ship the same day as purchased. Our SMA female connector is part of over 40,000 RF, microwave, and millimeter wave components in stock for worldwide shipment. We also build SMA custom connector cable assemblies that will ship the same day as well.

The SMA female connector with 50 Ohm impedance has a weight of 0.00465 lbs. This RF connector has a high-quality construction. The female coaxial connector is capable of operating at temperatures ranging from -55 deg C to 125 deg C. We currently have a variety of antenna, audio/video, Ethernet, fiber optic, and USB connectors in our portfolio that are ready to ship today. For further information on similar products, our expert technical support and knowledgeable sales team can help you get the high-quality RF that meets your requirements.

Electrical Specifications

Description	Minimum	Typical	Maximum	Units
Frequency Range	DC		18	GHz
Impedance		50		Ohms

Mechanical Specifications

Size

Length	0.57 in [14.48 mm]
Width	0.22 in [5.59 mm]
Height	0.39 in [9.91 mm]
Weight	0.0046 lbs [2.09 g]

RF PCB Connector, SMA, Female, Up to 18 GHz,
End Launch, Straight, With Round Contact



RFPCB-SMA-FS18G-52

Material Specifications

Description	Material	Plating
Contact	Beryllium Copper	Gold
Insulation	PTFE	
Body	Brass	Gold

Environmental Specifications

Temperature

Operating Range -55 to +125 deg C

Compliance Certifications (see [product page](#) for current document)

Plotted and Other Data

Notes:

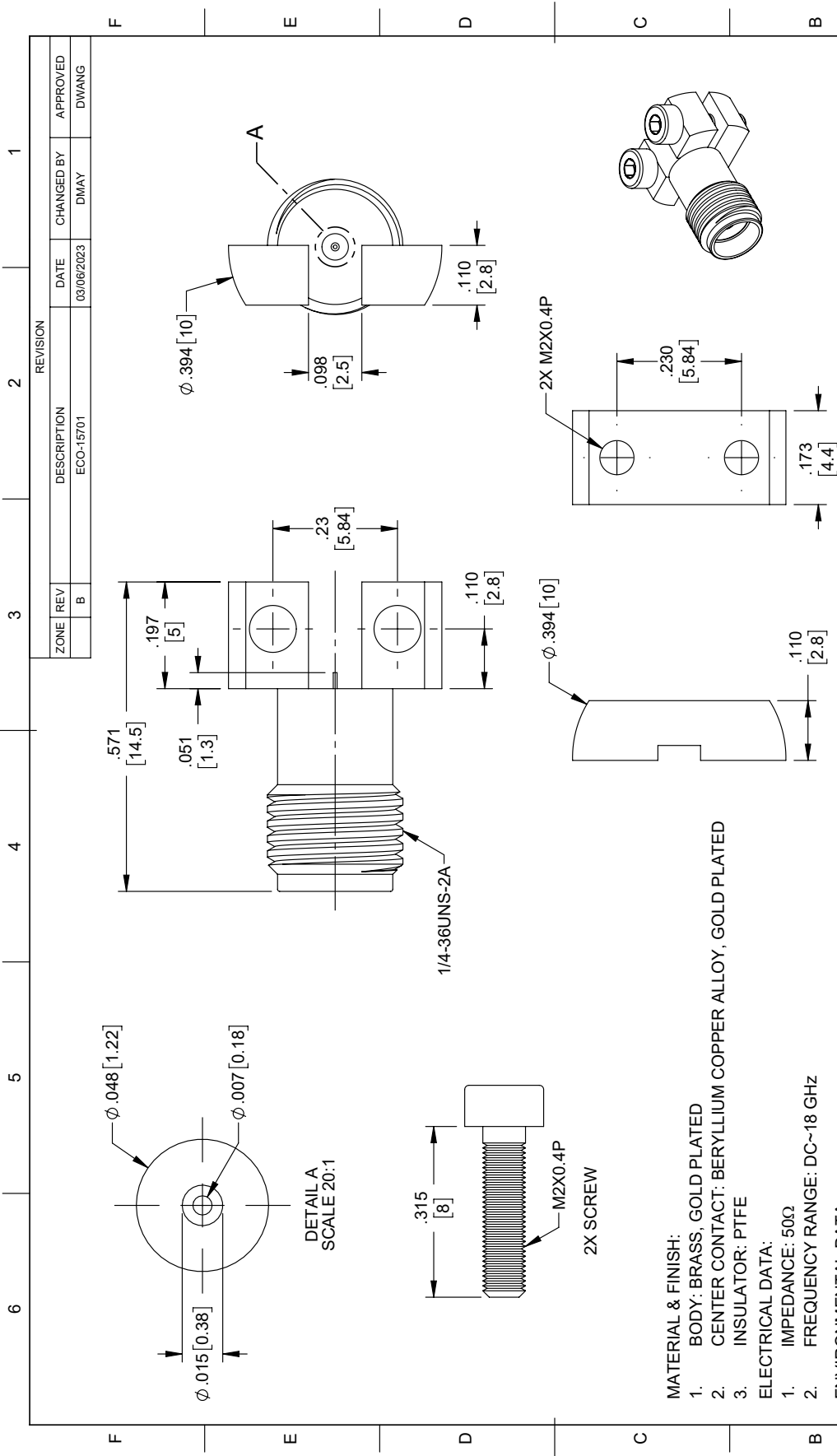
RF PCB Connector, SMA, Female, Up to 18 GHz, End Launch, Straight, With Round Contact from L-com has same day shipment for domestic and International orders. Our portfolio includes coaxial cable assemblies, connectors, adapters and custom products as well as lightning and surge protectors, NEMA rated enclosures, and an RF product line which includes antennas, amplifiers, passive, and active components.

URL: <https://www.l-com.com/rf-pcb-connector-sma-female-up-18-ghz-end-launch-straight-rfpcb-sma-fs18g-52.html>

The information contained within this document is accurate to the best of our knowledge and representative of the part described herein. It may be necessary to make modifications to the part and/or the documentation of the part in order to implement improvements. L-com reserves the right to make such changes as required. Unless otherwise stated, all specifications are nominal. L-com does not make any representation or warranty regarding the suitability of the part described herein for any particular purpose, and L-com does not assume liability arising out of the use of any part or document.

RFPCB-SMA-FS18G-52 CAD Drawing

RF PCB Connector, SMA, Female, Up to 18 GHz, End Launch, Straight, With Round Contact



REVISION		DATE	CHANGED BY	APPROVED
ZONE	REV			
	B	03/06/2023	DMAY	DWANG
DESCRIPTION				
ECO-15701				

 L-com an INFINITE brand Website: www.L-com.com Phone: 1.800.341.5266 1.978.682.6936		INTERPRET ALL DIMENSIONS AND TOLERANCES PER ASME Y14.5 SCALE: NONE SHEET: 1 OF 1
UNLESS OTHERWISE SPECIFIED, DIMENSIONS ARE IN INCHES. DIMENSIONS IN PARENTHESES ARE IN MILLIMETERS. TOLERANCES: .X = ±.2 [5] FRACTIONS .XX = ±.02 [0.5] ANGLES ± 1° .XXX = ±.005 [0.13] CABLE LENGTH TOLERANCES: $\le 10 [253]$ = ±1 [25] / -0 $\le 10 [253]$ = ±4 [102] / -0 $\le 10 [253]$ = ±6 [152] / -0 $\le 300 [7620]$ = ±5% / -0 >300 [7620] = ±5% / -0 CABLE LENGTH TOL. AWG IPC A-620 ALL DIMENSIONS ARE FOR REFERENCE ONLY. DIMENSIONS OF PARTS MAY VARY FROM DIMENSIONS OF DRAWING. UNDIMENSIONED NON-CRITICAL FEATURES MAY VARY IN SIZE AND LOCATION. COLORS MAY VARY.		RF PCB CONNECTOR, SMA, FEMALE, UP TO 18 GHz, END LAUNCH, STRAIGHT ITEM NO. RFPCB-SMA-FS18G-52 DRAWN BY DMAY CAGE CODE 43321 SIZE A

MATERIAL & FINISH:

- BODY: BRASS, GOLD PLATED
- CENTER CONTACT: BERYLLIUM COPPER ALLOY, GOLD PLATED
- INSULATOR: PTFE

ELECTRICAL DATA:

- IMPEDANCE: 50Ω
- FREQUENCY RANGE: DC~18 GHz

ENVIRONMENTAL DATA:

- OPERATING TEMPERATURE: -55°C~+125°C
- 1907/2006/EC(REACH): COMPLIANT

COMPONENT SHALL BE INDIVIDUALLY PACKAGED IN ACCORDANCE WITH L-COM SPECIFICATION PS-0031.

REGULATORY COMPLIANCE:

EU RoHS DIRECTIVE (MOST RECENT RELEASED VERSION)

THE INFORMATION CONTAINED IN THIS DRAWING IS THE SOLE PROPERTY OF INFINITE ELECTRONICS, INC. ANY REPRODUCTION IN PART OR WHOLE WITHOUT THE WRITTEN PERMISSION OF INFINITE ELECTRONICS, INC. IS PROHIBITED. THESE COMMODITIES, TECHNOLOGY OR SOFTWARE WERE DEVELOPED FROM THE UNITED STATES IN ACCORDANCE WITH THE EXPORT ADMINISTRATION REGULATIONS. DIVERSION CONTRARY TO U.S. LAW IS PROHIBITED.

LC LG Rev-D8 Asize