

RF PCB Connector, SMA, Female, Up to 6 GHz,
End Launch, Straight, Bulkhead



RFPCB-SMA-FS6G-41

Configuration

- SMA Female Connector
- 50 Ohms
- Straight Body Geometry
- End Launch Interface Type
- Solder Attachment
- Bulkhead Rear Mount

Features

- Max. Operating Frequency 6 GHz
- Gold Plated Beryllium Copper Alloy Contact
- Bulkhead

Applications

- General Purpose Test
- Rack and Panel Mount Applications
- PCB Applications

Description

RFPCB-SMA-FS6G-41 SMA female PCB connector available from L-com has a 50 Ohm impedance. This RF connector has an end launch connector mount interface and is designed for a wide variety of Printed-Circuit Board (PCB) applications in RF and microwave systems. This SMA female connector uses solder as an attachment method. Our SMA female PCB connector provides a minimum frequency of DC and a maximum frequency of 6 GHz. The SMA connector is available in a 0.67-inch length and 0.26-inch width. The L-com SMA female PCB connector has a PTFE dielectric type. This SMA PCB connector has a brass body with gold plating. Our RFPCB-SMA-FS6G-41 SMA connector uses beryllium copper alloy contacts and gold plating material. This SMA female PCB radio frequency connector is RoHS and REACH compliant.

This L-com SMA female connector will ship the same day as purchased. Our SMA female connector is part of over 40,000 RF, microwave, and millimeter wave components in stock for worldwide shipment. We also build SMA custom connector cable assemblies that will ship the same day as well.

The SMA female connector with 50 Ohm impedance has a weight of 0.00613 lbs. This RF connector has a high-quality construction. The female coaxial connector is capable of operating at temperatures ranging from -55 deg C to 125 deg C. We currently have a variety of antenna, audio/video, Ethernet, fiber optic, and USB connectors in our portfolio that are ready to ship today. For further information on similar products, our expert technical support and knowledgeable sales team can help you get the high-quality RF that meets your requirements.

Electrical Specifications

Description	Minimum	Typical	Maximum	Units
Frequency Range	DC		6	GHz

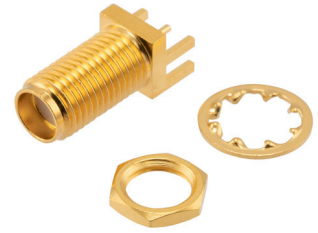
Mechanical Specifications

Size

Length	0.67 in [17.02 mm]
Width	0.26 in [6.60 mm]
Height	0.26 in [6.60 mm]
Weight	0.01 lbs [2.77 g]

Click the following link (or enter part number in "SEARCH" on website) to obtain additional part information including price, inventory and certifications:
[RF PCB Connector, SMA, Female, Up to 6 GHz, End Launch, Straight, Bulkhead RFPCB-SMA-FS6G-41](#)

RF PCB Connector, SMA, Female, Up to 6 GHz,
End Launch, Straight, Bulkhead



RFPCB-SMA-FS6G-41

Material Specifications

Description	Material	Plating
Contact	Beryllium Copper	Gold
Insulation	PTFE	
Body	Brass	Gold
Washer	Phosphor Bronze	Gold

Environmental Specifications

Temperature

Operating Range

-55deg C to +125deg C

Compliance Certifications (see [product page](#) for current document)

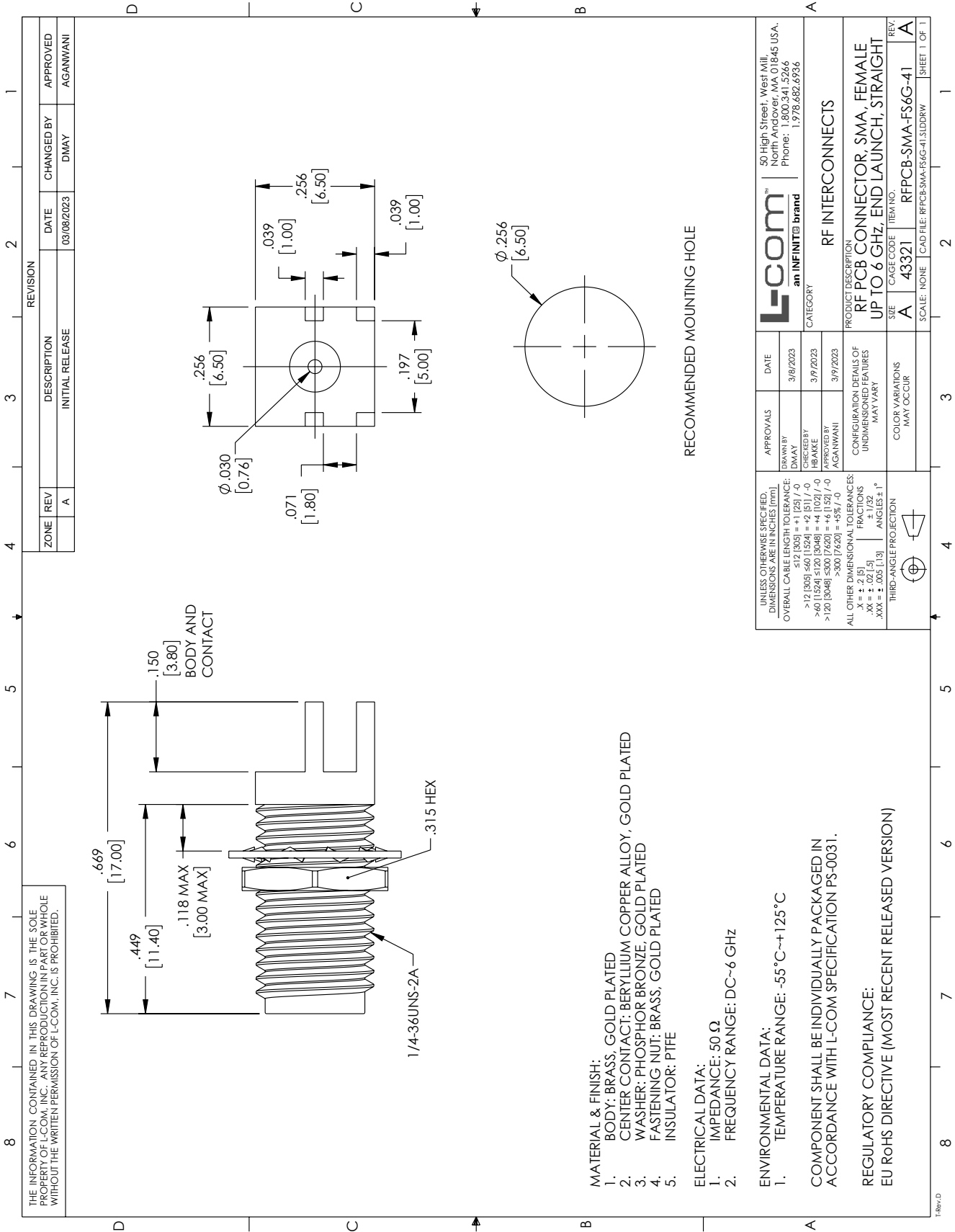
Plotted and Other Data

RF PCB Connector, SMA, Female, Up to 6 GHz, End Launch, Straight, Bulkhead from L-com has same day shipment for domestic and International orders. Our portfolio includes coaxial cable assemblies, connectors, adapters and custom products as well as lightning and surge protectors, NEMA rated enclosures, and an RF product line which includes antennas, amplifiers, passive, and active components. Click the following link (or enter part number in "SEARCH" on website) to obtain additional part information including price, inventory and certifications: RF PCB Connector, SMA, Female, Up to 6 GHz, End Launch, Straight, Bulkhead RFPCB-SMA-FS6G-41

URL: <https://www.l-com.com/rf-pcb-connector-sma-female-up-6-ghz-end-launch-straight-rfpcb-sma-fs6g-41-p.aspx>

The information contained within this document is accurate to the best of our knowledge and representative of the part described herein. It may be necessary to make modifications to the part and/or the documentation of the part in order to implement improvements. L-com reserves the right to make such changes as required. Unless otherwise stated, all specifications are nominal. L-com does not make any representation or warranty regarding the suitability of the part described herein for any particular purpose, and L-com does not assume liability arising out of the use of any part or document. The information contained within this document is accurate to the best of our knowledge and representative of the part described herein. It may be necessary to make modifications to the part and/or the documentation of the part in order to implement improvements. L-com reserves the right to make such changes as required. Unless otherwise stated, all specifications are nominal. L-com does not make any representation or warranty regarding the suitability of the part described herein for any particular purpose, and L-com does not assume liability arising out of the use of any part or document.

L-com CAD Drawing



THE INFORMATION CONTAINED IN THIS DRAWING IS THE SOLE PROPERTY OF L-COM, INC.. ANY REPRODUCTION IN PART OR WHOLE WITHOUT THE WRITTEN PERMISSION OF L-COM, INC. IS PROHIBITED.

- MATERIAL & FINISH:**
1. BODY: BRASS, GOLD PLATED
 2. CENTER CONTACT: BERYLLIUM COPPER ALLOY, GOLD PLATED
 3. WASHER: PHOSPHOR BRONZE, GOLD PLATED
 4. FASTENING NUT: BRASS, GOLD PLATED
 5. INSULATOR: PTFE

- ELECTRICAL DATA:**
1. IMPEDANCE: 50 Ω
 2. FREQUENCY RANGE: DC~6 GHz

- ENVIRONMENTAL DATA:**
1. TEMPERATURE RANGE: -55 °C~+125 °C

COMPONENT SHALL BE INDIVIDUALLY PACKAGED IN ACCORDANCE WITH L-COM SPECIFICATION PS-0031.

REGULATORY COMPLIANCE:
EU RoHS DIRECTIVE (MOST RECENT RELEASED VERSION)

ZONE	REV	DESCRIPTION	DATE	CHANGED BY	APPROVED
	A	INITIAL RELEASE	03/08/2023	DMAY	AGANWANI

 an INFINITE brand		50 High Street, West Mill, North Andover, MA 01845 USA, Phone: 1.800.341.5266 1.978.682.6936	
APPROVALS	DATE	CATEGORY	
DRAWN BY DMAY	3/8/2023	RF INTERCONNECTS	
CHECKED BY HBAKKE	3/7/2023	PRODUCT DESCRIPTION	
APPROVED BY AGANWANI	3/7/2023	RF PCB CONNECTOR, SMA, FEMALE UP TO 6 GHz, END LAUNCH, STRAIGHT	
UNLESS OTHERWISE SPECIFIED: DIMENSIONS ARE IN INCHES (mm)		SIE	
OVERALL CABLE LENGTH TOLERANCE: ≤12 [305] ≤60 [1524] = +2 [51] / -0 >60 [1524] ≤120 [3048] = +4 [102] / -0 >120 [3048] ≤300 [7620] = +6 [152] / -0 >300 [7620] = +5% / -0		CAGE CODE	
ALL OTHER DIMENSIONAL TOLERANCES: XX = ± .015 XXX = ± .005 (1:3) ANGLES ± 1°		ITEM NO.	
THIRD-ANGLE PROJECTION		43321	
THIRD-ANGLE PROJECTION		RFPCEB-SMA-FS6G-41	
COLOR VARIATIONS MAY OCCUR		SCALE: NONE	
CONFIGURATION DETAILS OF UNDIMENSIONED FEATURES MAY VARY		CAD FILE: RFPCEB-SMA-FS6G-41.SLDRAW	

T-Rev: 0